



# Sunshine Family News

## FEBRUARY 2007

It's the height of the season. The park will be filled to the brim. We have several rallies joining us this month. Be sure to check the calendar and the daily activities. There are a variety of activities planned for the month. You're bound to find something that will interest you.



### SUNSHINE TEAM

**Office Personnel**  
Mary Beth Humes  
Darleen Bradford

**Maintenance**  
Rich Byron  
Richard Williams

**Housekeeping**  
Jim Angevine

**Activities**  
Debbie Duncan  
Judy Smith  
Linda Westergard

**Camp Hosts**  
Roy & Brenda Brownell  
Lot #5  
John & Betty Fields  
Lot # 52  
Jerry & Joyce Keiser  
Lot # 25

**Pastor**  
Wayne Godwin

**OFFICE HOURS:**  
Monday-Saturday: 9-5  
Sunday—Closed

**Sunshine RV Resort**  
303 SR 70 East  
Lake Placid, FL  
33852  
863-465-4815

**SUNSHINE LIBRARY**— The library is located behind the office. Everyone is welcome to take out books. When you return books or if you are donating books to the park, please put them in the container provided. The library has great volunteers that keep the books in good order. Please do not leave magazines in the library. They can be taken to the laundry.

### HIGHLANDS COUNTY WATER RESTRICTIONS

Restrictions apply to the use of water from public and private utilities as well as the use of all wells and surface water sources (ponds, rivers, etc). The order goes into effect on **Tuesday, January 16, 2007** and remains in place until **July 31, 2007**.

**Lawns**--Properties under two acres in size may only water before 8 a.m. or after 6 p.m. (not both) for only 1 hour on the following day: house numbers ending in: 0 or 1- Monday, 2 or 3 – Tuesday, 4 or 5 – Wednesday, 6 or 7 - Thursday, and 8 or 9 - Friday.

**Cars**--may be washed **once weekly** for even house number Tuesday or Saturday and odd house numbers on Wednesday or Sunday.

**NO buildings** or RV's anytime.

Violations for failure to comply with restrictions will be enforced by local law enforcement. The first time is a warning, next is a \$50 fine that may be as high as \$500 if not paid when issued.

For complete details or to ask questions about these restrictions, visit the district's Web site at [www.WaterMatters.org](http://www.WaterMatters.org) or call 1-800-848-0499 or 1-800-423-1476, ext. 4498, during normal business hours.

## THANK YOU

A big thank you goes out to WW Lumber for their generous donation of wood for the petongue court. We can show our appreciation by making WW Lumber our first stop for hardware needs.

## SUNSHINE RESIDENTS' DIRECTORY

The 2006-2007 Sunshine directory of residents have been printed. They are available for purchase in the office for \$3.00. Mary Beth is putting together a directory of temporary residents and birthdays/anniversaries as well. If you have already purchased your directory, she will notify you when the additional pages are available.



### SUNSHINE SASSIES RED HATS



**Tuesday, February 13th**, at S.F.C.C. Matinee Show, RED HOT AND BLUE. Lunch at the Olympic Restaurant at 11:00 a.m. Call Ceil Fontaine for reservations at 465-2741. Meet at the mailboxes at 9:45 a.m.



*A ball is a circle, no beginning no end. It keeps us together like our circle of friends; but the treasure inside for you to see—is the treasure of friendship you've granted to me.*



*Author Unknown*

## UPCOMING TRIPS

**Arabian Nights—Orlando** - Wednesday, February 14 - Cost: \$42.00 Cost includes transportation, admission and lunch. Checks or money orders **only** made payable to: **Sunburst Tours**. Deadline for payment: **Thursday, February 1st**. *There are a few seats still available.*

**Key West & Everglades**—Wednesday, February 28— Cost: \$149 per person. Cost includes: Transportation, 2 nights hotel, 2 Continental breakfasts, Sawgrass Mills Mall, airboat ride, alligator show, tour Florida Keys, Mallory Square Sunset Celebration. Make checks/money orders **only** made payable to: Vision Travel by **Wednesday, February 7th**. *Taking alternates.*

**Strawberry Festival—Plant City**—Monday, March 5—Cost: \$19.00 (for transportation **only**) Leave at 9:30am - return approximately 9:00pm. Checks or money orders **only** made payable to: **Sunburst Tours**. Deadline for payment: **Monday, February 19th**. *Still some seats available.*

**Story Of Jesus—Wauchula**—Saturday, March 31—Cost: \$33.00. Cost includes transportation and admission. Leave at 6:00 pm—return 12:30 am. Checks or money orders **only** payable to: **Sunburst Tours**. Deadline for payment: **Friday, February 23rd**.

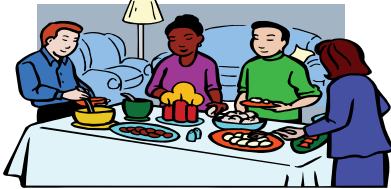
**We encourage you to sign up early for trips so you won't get left behind. Sign-up in the office from 10-2 or at Coffee Hour on Wednesday mornings.**

## FOOD EVENTS

### MINI POT-LUCK LUNCH February 1st, 12 Noon

Bring some food to share with friends and neighbors and enjoy the fellowship. **BYOS&P**

### POT LUCK SUPPER Wednesday, February 7th 5:00 PM



Please bring a dish to pass to serve 12 people. Sign up in the back of the Club House so we know how many to setup for. See you there!



### POOL PARTY February 3 2:00 PM Music by Frank

Frank will be playing for donations. Please be generous.

**Bring finger foods to share. Iced tea will be provided.**

### HOME STATE OR CANADA DAY

The following states are having a pot luck luncheon in February. Please sign up for a dish to pass in the Club House. Share a meal and fellowship with people from your home state or Canada at 1:00 p.m. in the Club House

**Michigan Day—February 4th  
Ohio Day—February 11th  
Canada Day—February 18th**

#### MONDAYS

8:00 a.m. Cardio Blast  
9:00 a.m. Horseshoes  
9:30 a.m. Pool Exercise  
9:30 a.m. Petonque  
12:30 p.m. Bowling  
1:00 p.m. Quilting - Club House  
6:45 p.m. Bingo

#### TUESDAYS

8:00 a.m. Tai Chi  
9:00 a.m. Horseshoes  
9:00 a.m. Crafts  
9:30 a.m. Bocci  
9:30 a.m. Pool Exercise  
11:30 a.m. Hot Dogs  
2:00 p.m. Singles  
2:00 p.m. Signing-Rec Hall  
7:00 p.m. Bible Study-1<sup>st</sup>&3<sup>rd</sup> Tues  
Gospel Sing-2<sup>nd</sup>&4<sup>th</sup> Tues  
7:00 p.m. Euchre

### DAILY ACTIVITIES

#### WEDNESDAYS

7:45 a.m. Blood Pressure Check  
2<sup>nd</sup> & 4<sup>th</sup> in small Hall  
8:30 a.m. Donuts and Coffee  
9:00 a.m. Horseshoes  
9:30 a.m. Pool Exercise (10 minutes after coffee)  
9:30 a.m. Belly Dancing  
1:00 p.m. Hoe-Down  
7:00 p.m. Game Night

#### THURSDAYS

8:00 a.m. NIA (martial arts & dance)  
9:00 a.m. Horseshoes  
9:00 a.m. Crafts  
9:30 a.m. Pool Exercise  
9:30 a.m. Shuffle Board  
1:00 p.m. Beginner Bridge  
2:00 p.m. Choir Practice  
7:00 p.m. Square Dance

#### FRIDAYS

8:00 a.m. Belly Dancing  
9:00 a.m. Horseshoes  
9:30 a.m. Pool Exercise  
9:30 a.m. Petongue  
9:30 a.m. Square Dance Lessons  
6:45 p.m. Bingo

#### SATURDAYS

9:00 a.m. Horseshoes

#### SUNDAYS

9:00 a.m. Church

**FYI Some notes if you are new to the park:  
Explanations, Please.....**

**BYOS** Bring Your Own Service  
**BYOB&S** Bring Your Own Bowl & Service  
**BYOS&D** Bring Your Own Service & Drink  
**BYOCC** Bring Your Own Coffee Cup  
**BYOS&P** Bring Your Own Service & Placemat

# ACTIVITIES

## NORTHMEN

Southern Gospel Concert

**Wednesday, February 7th**

**6:30 PM**

**\$5.00 donation per person**

The Northmen are in their 17th year as a full-time southern gospel ministry. They are busier than ever, singing over 200 concert dates per year and sharing the gospel in venues across the country.

## BLOOD DRIVE

There is another blood drive scheduled for Friday, February 9th, from 8:30-1. The blood mobile will be parked outside the Club House. The response was fantastic in December.

If you are able to donate, please do so. There is always a great demand for blood. We are waiting for the sign-up sheet to arrive. As soon as it does it will be posted in the back of the Club House. Please sign up. **BRING PHOTO ID.**

## Wet on Wet Painting Class

**February 9, 2007**

**9-4** (1 hour break for lunch)

By Bob Ross instructor

Elly Teitsma

You will have a completed (*and framed if you wish*) painting when you finish the class that day. The painting will be a lighthouse seascape. This is an instructional class and anyone can do it! All supplies are furnished. Cost is \$50

## BASKET WEAVING

Come and learn how to weave your own basket. Debi Thompson, a former resident, is the instructor. She's an excellent instructor. She'll be teaching two separate baskets in February from 9-3. She needs a minimum of 10 people per class. Cost includes instructions and all materials.

February 13	Double Pie Basket	cost \$35.00
February 27	Napkin Basket	cost \$10.00

Checks or money orders made payable to: Debi Thompson.

## VALENTINE DANCE

**Saturday, February 17th**

**8-11 PM**

Music by L & L Duo

**Donations \$5.00**

Tickets are available in the office  
Monday—Saturday from 10-2.

## PREVENTION PLUS SCREENING

**Friday, February 23rd**

**In The Small Rec Hall**

The goal of Prevention Plus is to detect illness early with preventative ultrasound screenings made affordable to everyone and available without a prescription. A personal wellness plan is priceless! Please call **1-888-667-7587** for an appointment.

## BRIAN BRACEY & ONE REASON IN CONCERT

**Sunday, February 25th, at 7:00 p.m. in the Club House. Donations: \$5.00 per person.**